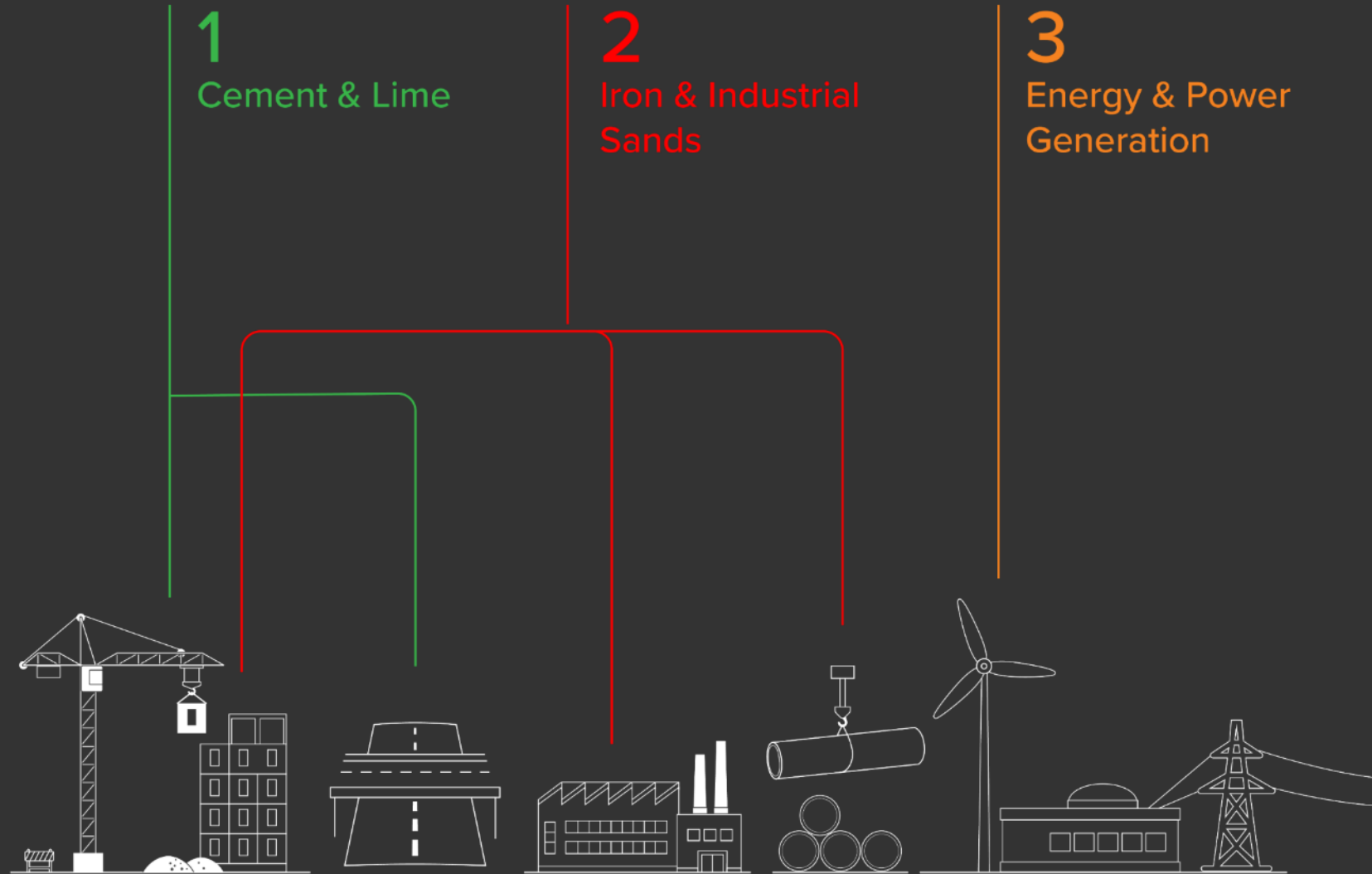


# Nation building in Papua New Guinea

Paul Mulder, Managing Director

June 2021



# Disclaimer

This presentation has been prepared by Mayur Resources Limited ARBN 619 770 277 (“Mayur” or the “Company”). The information contained in this presentation is for information purposes only and has been prepared for use in conjunction with a verbal presentation and should be read in that context.

The information contained in this presentation is not investment or financial product advice and is not intended to be used as the basis for making an investment decision. Please note that, in providing this presentation, Mayur has not considered the objectives, financial position or needs of any particular recipient. Mayur strongly suggests that investors consult a financial advisor prior to making an investment decision. It may not be reproduced, disseminated, quoted or referred to, in whole or in part, without the express consent of Mayur.

No representation or warranty, express or implied, is made as to the fairness, accuracy, completeness or correctness of the information, opinions and conclusions contained in this presentation. To the maximum extent permitted by law, none of Mayur, its related bodies corporate, shareholders or respective directors, officers, employees, agents or advisors, nor any other person accepts any liability, including, without limitation, any liability arising out of fault or negligence for any loss arising from the use of information contained in this presentation.

This presentation includes “forward looking statements” within the meaning of securities laws of applicable jurisdictions. Forward looking statements can generally be identified by the use of the words “anticipate”, “believe”, “expect”, “project”, “forecast”, “estimate”, “likely”, “intend”, “should”, “could”, “may”, “target”, “plan” “guidance” and other similar expressions. Indications of, and guidance on, future earning or dividends and financial position and performance are also forward-looking statements. Such forward-looking statements are not guarantees of future performance and involve known and unknown risks, uncertainties and other factors, many of which are beyond the control of Mayur and its officers, employees, agents or associates, that may cause actual results to differ materially from those expressed or implied in such statement. Actual results, performance or achievements may vary materially from any projections and forward looking statements and the assumptions on which those statements are based. Readers are cautioned not to place undue reliance on forward looking statements and Mayur assumes no obligation to update such information. Specific regard (amongst other things) should be given to the risk factors outlined in this presentation.

This presentation is not, and does not constitute, an offer to sell or the solicitation, invitation or recommendation to purchase any securities and neither this presentation nor anything contained in it forms the basis of any contract or commitment.

Non-IFRS Measures - the Company supplements its financial information reporting determined under International Financial Reporting Standards (IFRS) with certain non-IFRS financial measures, including cash operating costs, All-In Sustaining Cost, EBITDA, NPV, IRR and project payback. The Company believes that these measures provide additional meaningful information to assist management, investors and analysts in understanding the financial results and assessing our prospects for future performance.

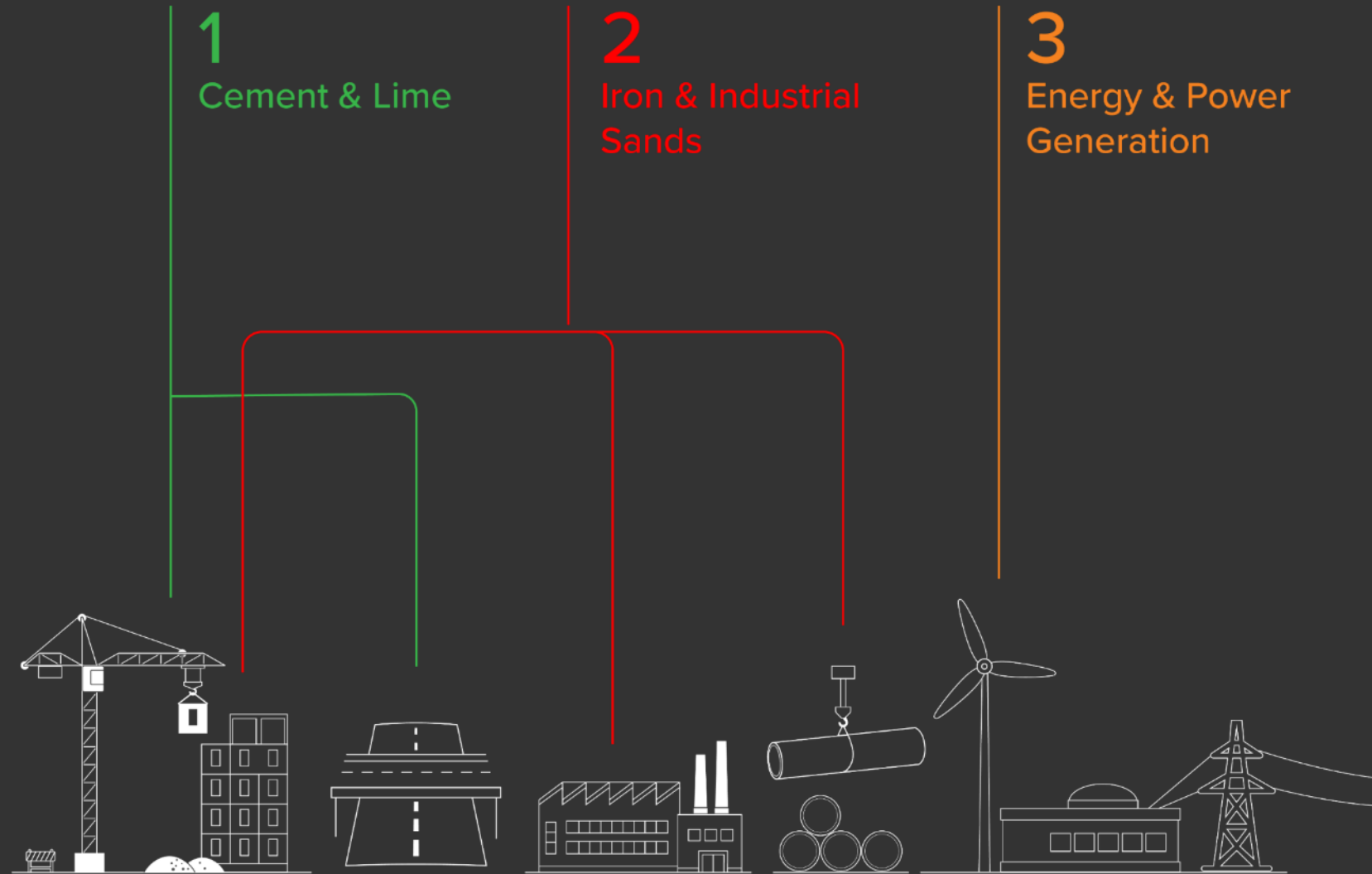
# Nation building in Papua New Guinea

Mayur Resources is an ASX-listed company focused on the development of natural resources in **Papua New Guinea**.

Delivering our diversified asset portfolio, which spans **cement and lime**, **iron and industrial sands**, and **energy and power generation**, will contribute to nation-building and job creation in a country experiencing a significant growth trajectory.

*Nation building in  
Papua New Guinea*

3-ASX: MRL



## Corporate overview

Share price

\$A0.22

14 June 2021 close

52 week high 65c, low 15c

Shares on issue

217m

Options (unlisted)

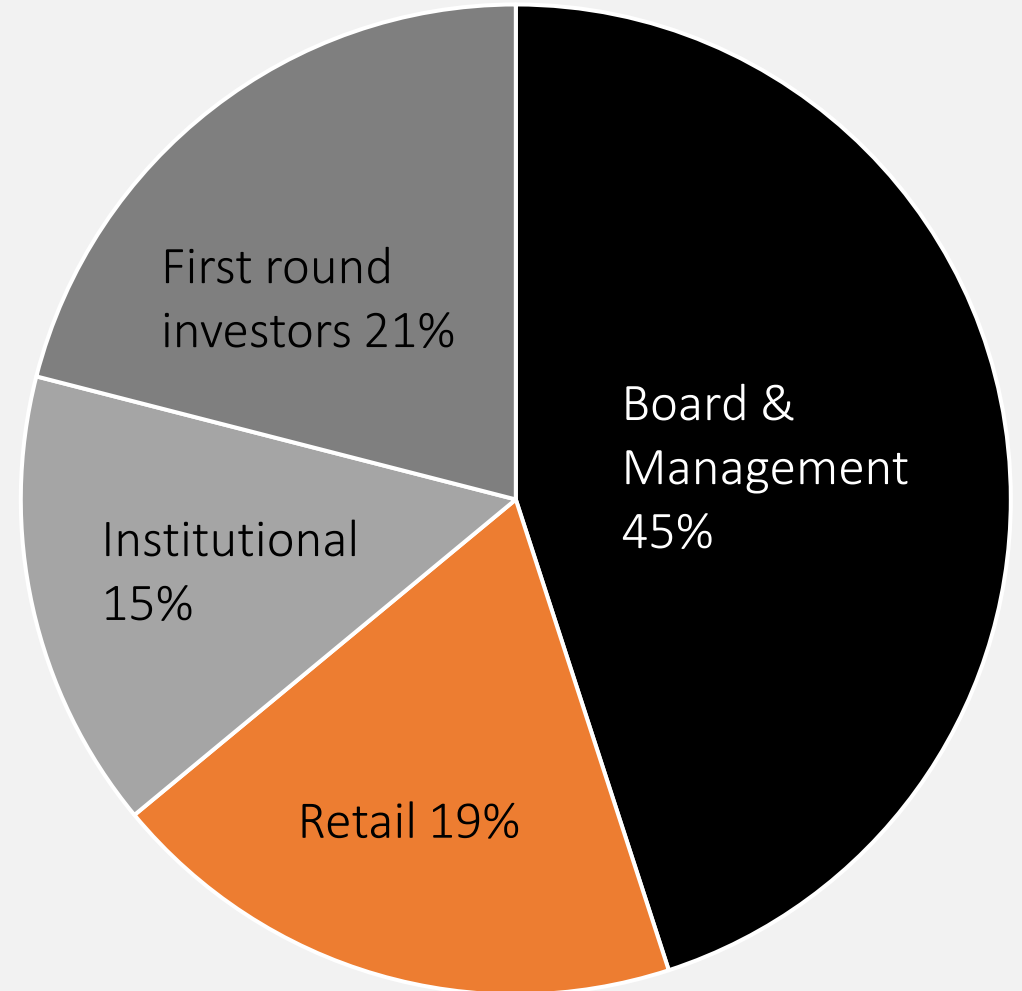
20m

Market capitalisation

\$52.1m

14 June 2021 close

Fully diluted basis





# Why Invest?

Exposure to key commodities for nation building with ready markets.

- Simple, well-advanced projects – exploration and permitting risk removed and large terminal markets.
- Well established in-country relationships (operating in PNG for over a decade).
- Sum of our parts much more than our whole – executing disaggregation of pure play businesses has and will realise major value.

*Nation building in  
Papua New Guinea*

5-ASX: MRL





## Primary projects

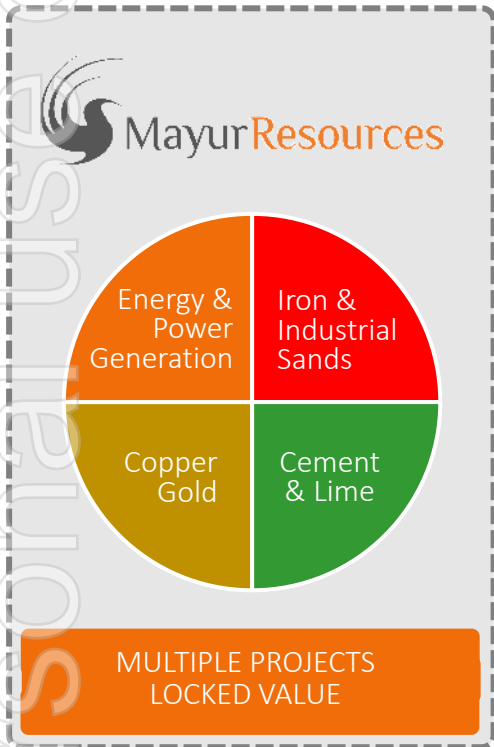
Mayur Resources has a unique portfolio of projects under development in a jurisdiction that hosts world-class projects.

All projects are coastal or in close proximity to the coast for ease of development and future access to sea borne markets.



# Executing Disaggregation Strategy

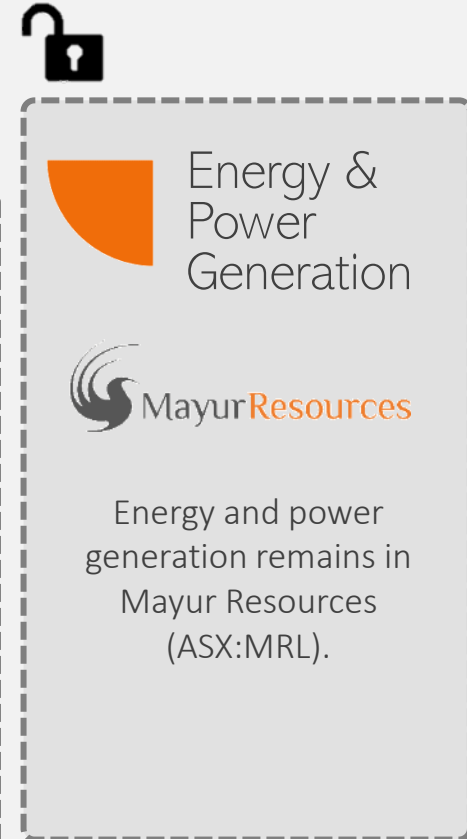
 Jan 2021



 Feb 2021



Unlocking value



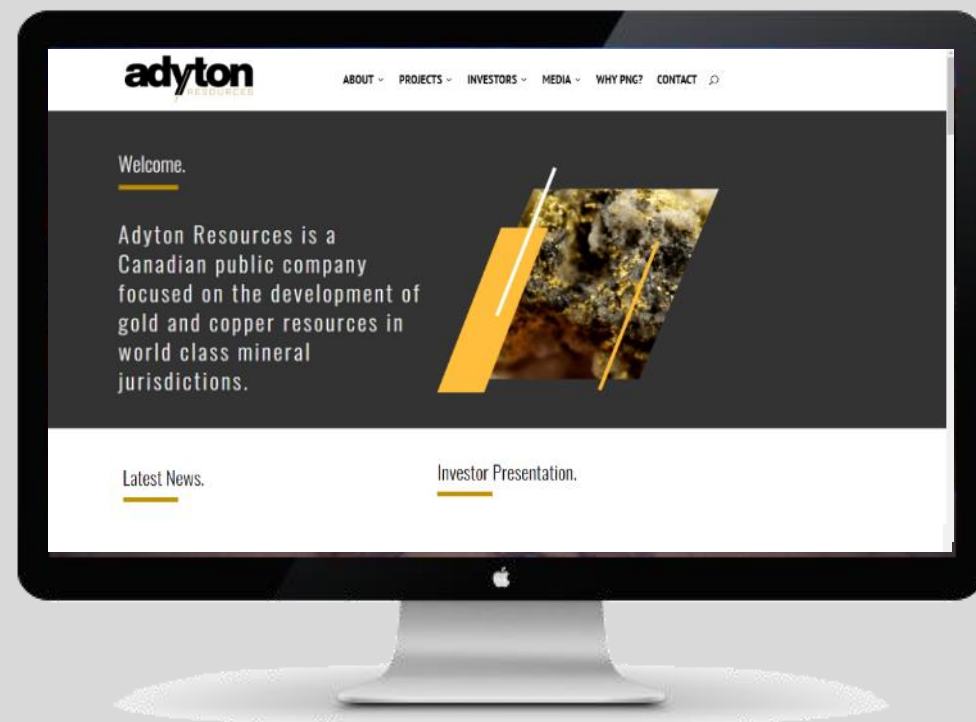
# Adyton Resources Spin Out (TSXV:ADY)

Disaggregation of Mayur's copper/gold assets on the TSXV.

- Tangible uplift for Mayur shareholders where no value was previously attributed.
- Raised CAD\$10.5 million.
- Valued at CAD\$38 million on listing.
- Announced mid 2020, delivered Feb 2021.
- 2021 drilling could lead to significant re-rating.

*Nation building in  
Papua New Guinea*

8-ASX: MRL





# Central Cement & Lime Project

Low cost, high quality lime and cement for PNG and growing Australian and Pacific markets.

- PNG's first lime and cement project.
- Located on coast, 25km from Port Moresby, adjacent to the PNG LNG Plant.
- Mining Licence granted in August 2020.
- Fully integrated project within Mining Lease (Quarries, Quicklime, Clinker/ Cement, Wharf, Power)
- Significant freight advantage compared to Asian suppliers.
- 30-year minimum production life.

*Nation building in  
Papua New Guinea*



Cement &  
Lime

## Mayur Cement & Lime

Value look through as  
standalone entity.

Quicklime plant to be  
prioritized as first phase

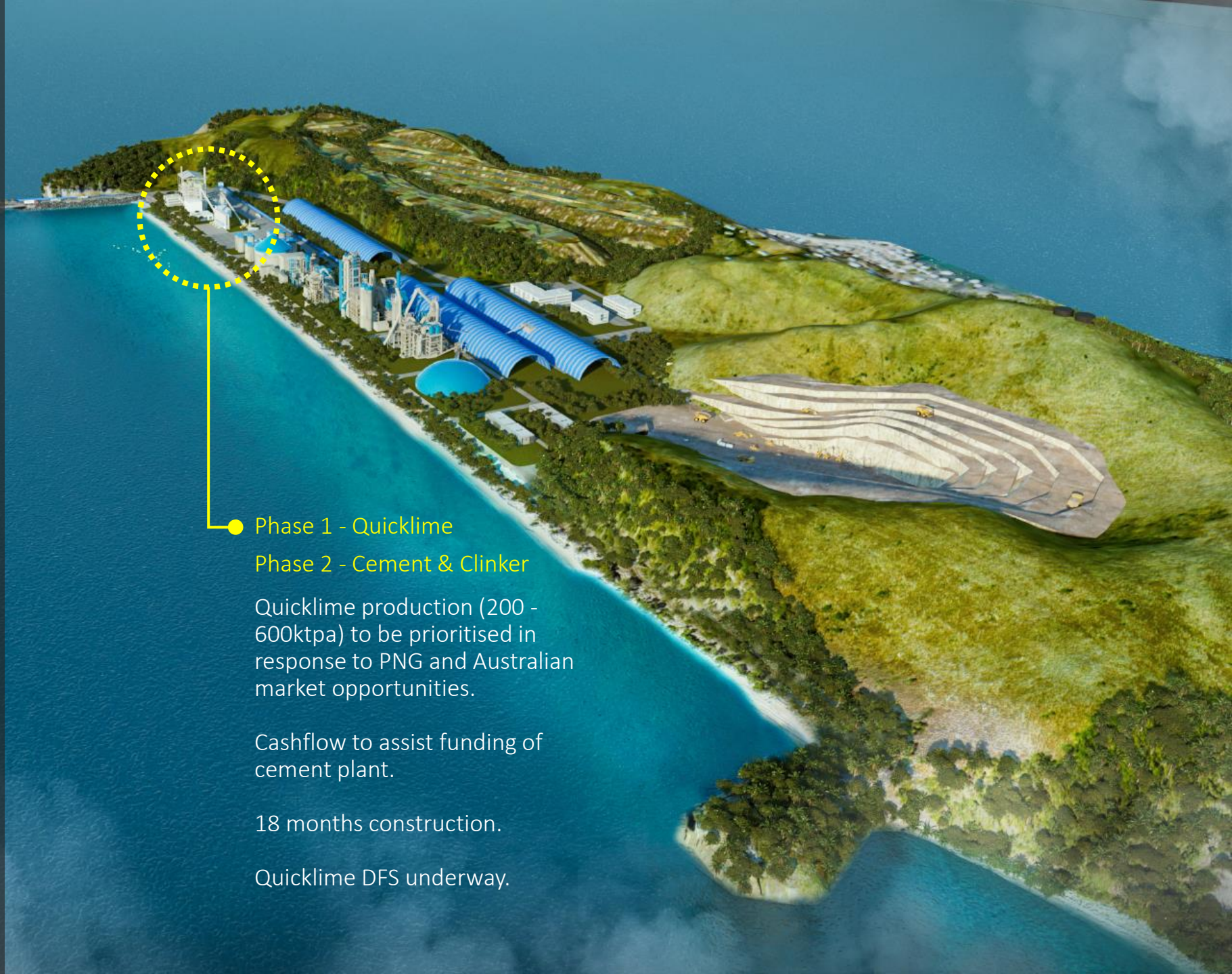




## Central Cement & Lime Project

# Shovel ready and fully permitted.

- ✓ Mining Licence granted in August 2020 in 13 months.
- ✓ Construction bids received.
- ✓ Full support from State, Provincial Governments & Landowners.
- ✓ Environmental approvals in place.
- ✓ Project de-risked with very attractive economics.
- ✓ Scalable growth that is not constrained by the Resource.



### ● Phase 1 - Quicklime

### Phase 2 - Cement & Clinker

Quicklime production (200 - 600ktpa) to be prioritised in response to PNG and Australian market opportunities.

Cashflow to assist funding of cement plant.

18 months construction.

Quicklime DFS underway.



## Central Cement & Lime Project

### Attractive returns

- Attractive long life standalone project
- Whole of project economics cover clinker/cement and quicklime production
- Prioritization of Quicklime project to unlock and de-risk development - provide cashflow for full cement and clinker development

*Nation building in  
Papua New Guinea*

#### UNGEARED

NPV (@9%)

US\$352m

Internal Rate of Return (IRR)

23.9%

Payback period

5.2 years

#### GEARED

NPV (@9%)

US\$397m

IRR

39.5%

Payback period

3.2 years



## Central Cement & Lime Project

# Supportive market metrics

## Growing market demand

- All clinker and cement is imported into PNG and no domestic quicklime production exists to supply largest user (Lihir Mine).
- Mayur CCL project will displace clinker and cement imports into PNG meeting domestic demand, whilst also supplying clinker, cement and lime to the Australia and Pacific Islands export markets.
- ESG concerns are likely to see early retirement of the current Australian kiln fleet

*Nation building in  
Papua New Guinea*

### Stage 1 – Quicklime Development

CCL Quicklime production

0.2 to 0.6mtpa



PNG & Australian quicklime market

2.5mtpa

Imports ~0.3mtpa

### Stage 2 – Cement & Clinker Development

CCL Clinker production

0.82mtpa



Australian clinker market

10mtpa

Imports 4.2mtpa

CCL Cement production

0.90mtpa



PNG & Australian cement market

11.6mtpa

Imports ~1.5mtpa

## Central Cement & Lime Project

# Freight advantage

- Project is significantly closer to users in Australia and the South Pacific than Asian suppliers.
- Shorter lead times and enhanced responsiveness to customer needs.



Lower shipping costs and carbon footprint due to shorter sailing times.



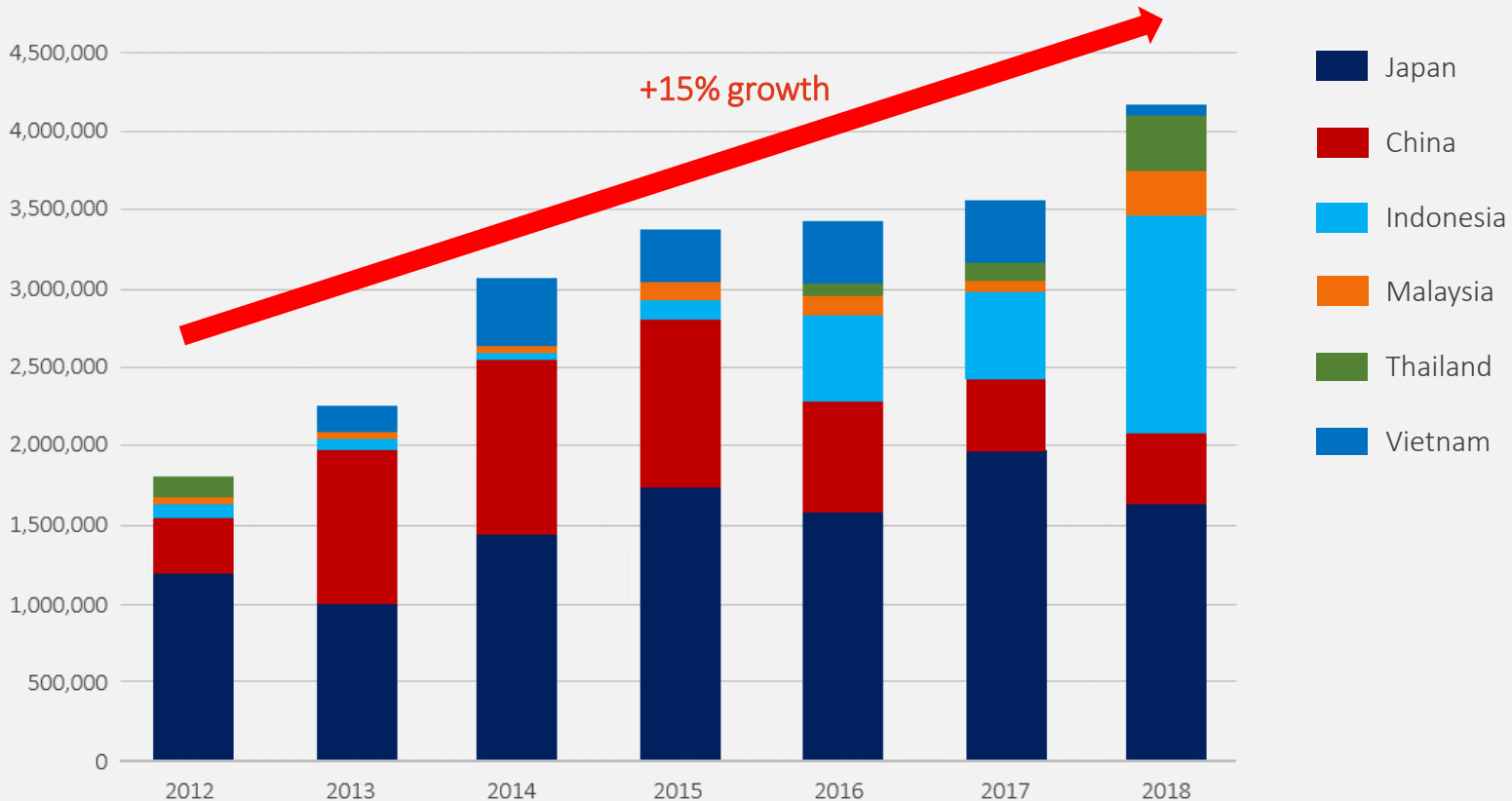


# Growing Australian clinker imports

Australian clinker imports have grown by 15% per year since 2012, representing a structural change.

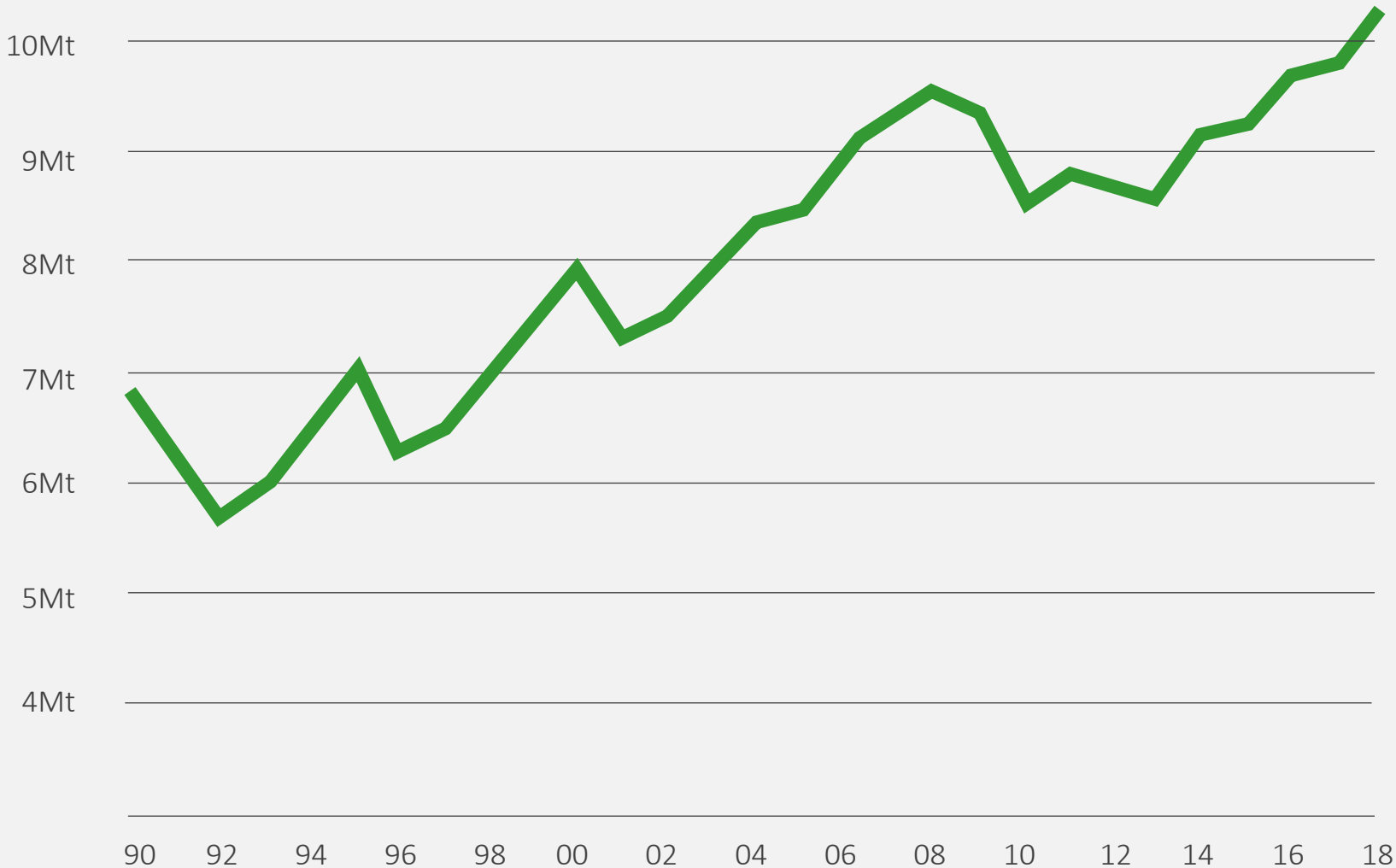
- Australian clinker production is declining with only four kilns now operating in Australia.
- Australia is unlikely to see development of new kilns and will continue to increase reliance on imports

Clinker imports into Australia (tonnes)



# Growing Australian cement consumption

Cement consumption in Australia continues to follow upward trajectory.



## Australia looking to overseas lime

Alcoa's decision in June 2020 to end its supply contract of domestic lime after 50 years is a clear indicator that markets are hungry to source and utilise superior quality, higher performing products, even from abroad, thus diversifying and lowering their total costs and increasing effectiveness of their consumable input products.

# Adbri shares plunge after Alcoa ends lime contract



**Brad Thompson**  
Reporter

Jul 3, 2020 - 12:59pm

Save

Share

Adbri is reeling after US aluminium giant Alcoa opted to turn its back on local sourcing of lime for its three alumina refineries in Western Australia.

Alcoa's decision not to renew a long-standing supply contract with [Adbri-owned Cockburn Cement](#) saw more than \$515 million stripped from the value of the company formerly known as Adelaide Brighton.

The Adbri share price had nosedived to \$2.35 by the close on Friday, down just over 25 per cent from its closing price on Thursday.

Adbri share price, daily (\$)



SOURCE: BLOOMBERG

It is understood up to 50 jobs, including contractors, are at risk as Alcoa looks to source lime from overseas.

### RELATED QUOTES

ABC \$2.38 ▲ 0.21%

1 year 1 day



Updated: Aug 21, 2020 - 1:29pm. Data is 20 mins delayed.

[View ABC related articles](#) →

## Central Cement & Lime Project

# ESG commitment



*seeking to become Asia Pacific's first net zero cement and lime producer by 2030*



### Environmental

- The project produces no solid waste, no tailings and uses no chemicals
- Environmental Permit in place for the Project issued by CEPA
- Draft Environmental Management and Monitoring Plan (EMMP) prepared, submitted and approved by CEPA
- No untreated water or solid discharges



### Social

- Significant legacy and enabling infrastructure to be developed
- Commitments to fund spin off businesses
- At least 363 full time jobs and 1800 construction Jobs
- Contributes to real GDP growth in PNG by up to 1.95 per cent
- Electricity and potable water provided to local villages



### Governance

- Project to conform with the Equator Principles
- Ongoing environmental monitoring and community engagement
- Providing support for a Community Based Company and Spin-off businesses
- Mining License granted in August 2020

## Mayur Iron

Mayur Iron is a subsidiary of Mayur Resources and has simple near-term cashflow projects with iron ore exposure.

- Mayur Iron's portfolio includes the flagship Orokolo Bay Iron Sands Project and the Amazon Bay iron-vanadium project.
- To be rebadged as **Ortus Resources** with a planned listing on the ASX in 2021.
- Production planned for 2022

*Nation building in  
Papua New Guinea*



Iron &  
Industrial  
Sands

**Mayur Iron**



**ORTUS**  
RESOURCES

Value look through as  
standalone entity.

New Chair and CEO  
appointed to lead  
disaggregation.





# Gulf Project Precinct - Orokolo Bay and neighboring mineralised province



Personal use only

## OROKOLO BAY

- FLAGSHIP PROJECT to be brought into production in 2022
- 8 years of development including +2000 drill holes and extensive studies
- OBP technically de-risked with DFS complete and Mining Lease pending

## GULF SOUTH

JORC Resource extension from OBay

KEREMA  
(Provincial Capital)

Road to Port Moresby

## MALALAU

- Future production target  
Extensive drilling completed
- Malalaua to be the “next cab off the rank” (very similar to Orokolo Bay)



Mining Lease Boundary

30 km





## Mayur Iron

# Orokelo Bay Iron Sands Project

- Low capex (US\$21M) development with 15-year life of mine (LOM) and short payback.
- DFS\* completed employing conservative commodity pricing based on long term iron ore price of US\$66.30/t
  - Post tax (real) NPV10 of US\$131M
  - IRR of 103.7%
- Low capex barging and transshipping logistics solution.
- Large JORC Resource.
- Mining Lease application lodged.
- 25-year Environmental Permit in place

*Nation building in  
Papua New Guinea*

20 ASX: MRL



Pioneering camp with Muro river in the background – location of barge loading facility

\* For further information refer to Orokelo Bay DFS ASX announcement dated 11 September 2020. The company confirms it is not aware of any new information or data that materially effects the previously disclosed information and that all material assumptions and technical parameters underpinning the estimates in that information continue to apply and have not materially changed.

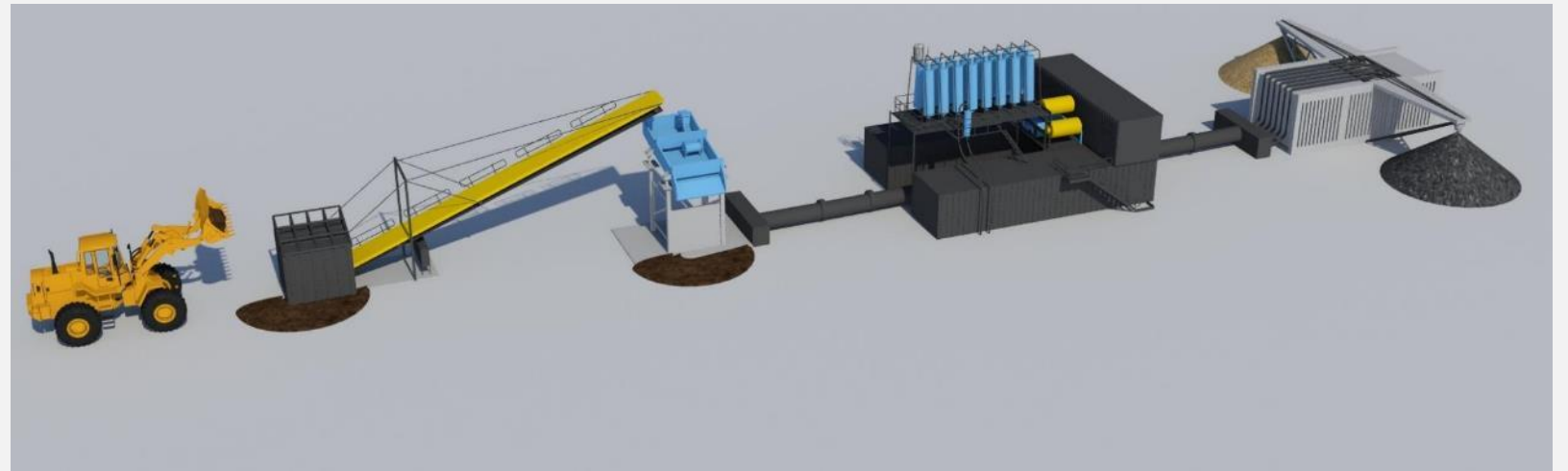
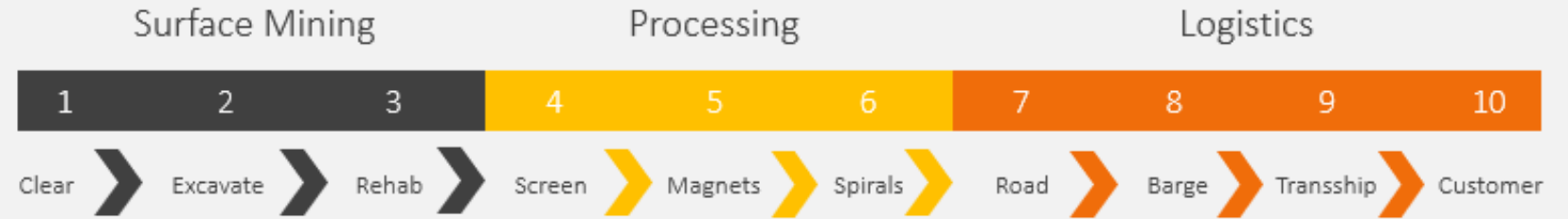


## Orokolo Bay Iron Sands Project

# A simple, low-cost surface mine.

- Multi commodities:
  - Vanadium Titano-magnetite 0.5Mt pa
  - Construction Sand 1Mt pa
  - Zircon 8kt pa
  - Ability to pursue high margin Dense Medium Separation (DMS) market in Australia
- Low capex barging and transshipping logistics solution.
- Large JORC Resource.
- Mining Lease application lodged.
- DFS completed.

*Nation building in  
Papua New Guinea*



Mayur Iron

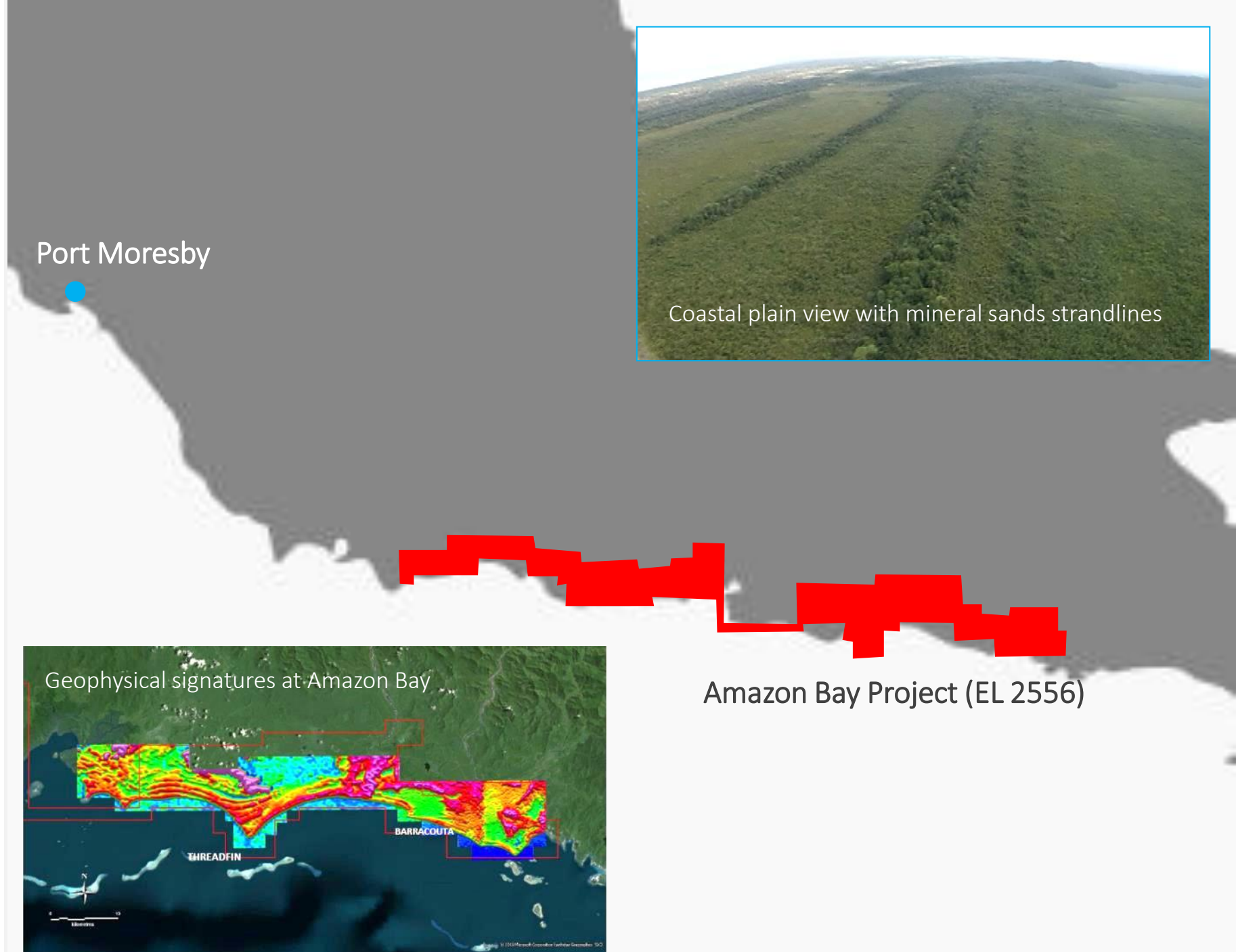
## Amazon Bay Project

Three high value product streams  
- Iron, Vanadium, TiO<sub>2</sub>

- Large area with multiple heavy mineral strandlines with the potential to host globally significant resources of vanadium-titanium-magnetite (VTM sands).
- Historical test work has produced a heavy mineral concentrate grading 1.02% V<sub>2</sub>O<sub>5</sub>; 50.7% Fe and 20.0% TiO<sub>2</sub>.

*Nation building in  
Papua New Guinea*

22 ASX: MRL



# Energy & Power Generation

PNG Government's vision is to increase electrification from 13% to 70% by 2030.

- Mayur continues to develop a pipeline of energy and power generation opportunities across PNG.
- Leverage Mayur's deep in-country experience and relationships.



Reduce cost of power while reducing carbon footprint.



Energy &  
Power  
Generation



MayurResources

Energy and power  
generation remains in  
Mayur Resources  
(ASX:MRL).





# Lae Enviro Energy Park Project

52.5MW power station with future scalability to 200MW

- Provide Lae with access to reliable, affordable and sustainable base load power.
- Plant takes solar, biomass woodchip, coal and produces steam by-product.



Major improvement in local air quality, displacing diesel and heavy fuel oils.





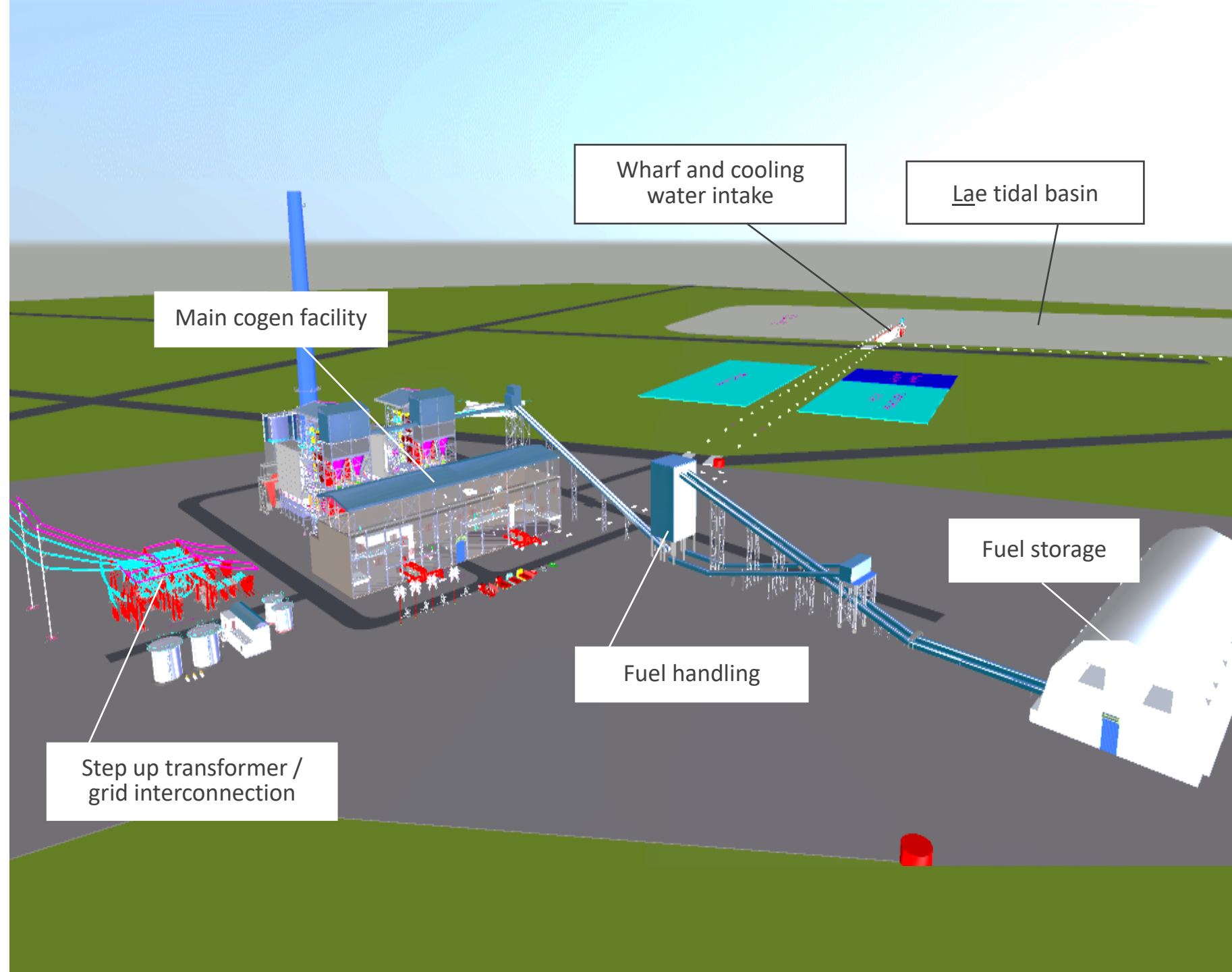
## Lae Enviro Energy Park Project

# Powering PNG.

Assist PNG Government to increase electrification from 13% to 70% by 2030 from 13%.

- 40-50% of Lae electricity is diesel fired at a cost of over US30c/kWh. Lae Project to provide power at max US12.7c/kWh.
- HOA with Kumul Petroleum also examining dual fuel facilities.
- Site lease with PNG Ports.
- MOAs with local authorities.
- Government approvals.

*Nation building in  
Papua New Guinea*

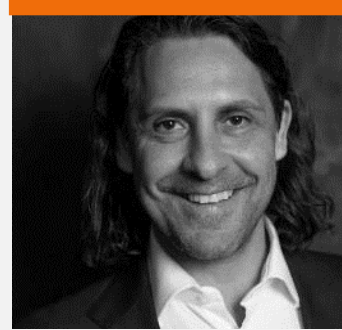


# Leadership

An experienced management team with an impressive track record of successfully managing and developing major resource projects.



**Paul Mulder**  
MANAGING DIRECTOR



**Frank Terranova**  
INTERIM CHAIRMAN



**Tim Crossley**  
EXECUTIVE DIRECTOR



**Hubert Namani**  
INDEPENDENT DIRECTOR



**Richard Seville**  
CHAIRMAN, MAYUR IRON



**Simon Slesarewich**  
CEO, MAYUR IRON



**Trent Alexander**  
COO, LIME & CEMENT



**Bruno Wauters**  
BOARD ADVISOR, LIME & CEMENT



# Competent Person's Statement

Statements contained in this announcement relating to Mineral Resources and Ore Reserves estimates for the Central Cement and Lime Project are based on, and fairly represents, information and supporting documentation prepared by Mr. Rod Huntley, who is a member of the Australian Institute of Geoscientists. Mr. Huntley has sufficient and relevant experience that specifically relate to the style of mineralisation. Mr Huntley qualifies as a Competent Person as defined in the Australian Code for Reporting of Identified Mineral Resources and Ore Reserves (JORC) Code 2012. Mr Huntley is an employee of Groundworks Pty Ltd contracted as a consultant to Mayur Resources and consents to the use of the matters based on his information in the form and context in which it appears. As a competent person, Mr Huntley takes responsibility for the form and context in which the Mineral Resources and Ore Reserves prepared for the Central Cement and Lime Project appears.

Statements contained in this presentation relating to Mineral Resources and Ore Reserves estimates for the Orokolo Bay Industrial Sands Project are based on, and fairly represents, information and supporting documentation prepared by Mr Troy Lowien who is a member of the Australian Institute of Geoscientists. Mr Lowien has sufficient and relevant experience that specifically relate to the style of mineralization. Mr Lowien qualifies as a Competent Person as defined in the Australian Code for Reporting of Identified Mineral Resources and Ore Reserves (Code 2012). Mr Lowien is an employee of Groundworks Pty Ltd contracted as a consultant to Mayur Resources and consents to the use of the matters based on his information in the form and context in which it appears. As a competent person, Mr Lowien takes responsibility for the form and context in which Mineral Resources and Ore Reserves prepared for the Orokolo Bay Project appears.

## Contact

[mayurresources.com](http://mayurresources.com)

+61 (0)7 3157 4000

[info@mayurresources.com](mailto:info@mayurresources.com)

*Nation building in  
Papua New Guinea*

28 ASX: MRL



Paul Mulder  
MANAGING DIRECTOR



Tim Crossley  
EXECUTIVE DIRECTOR

